



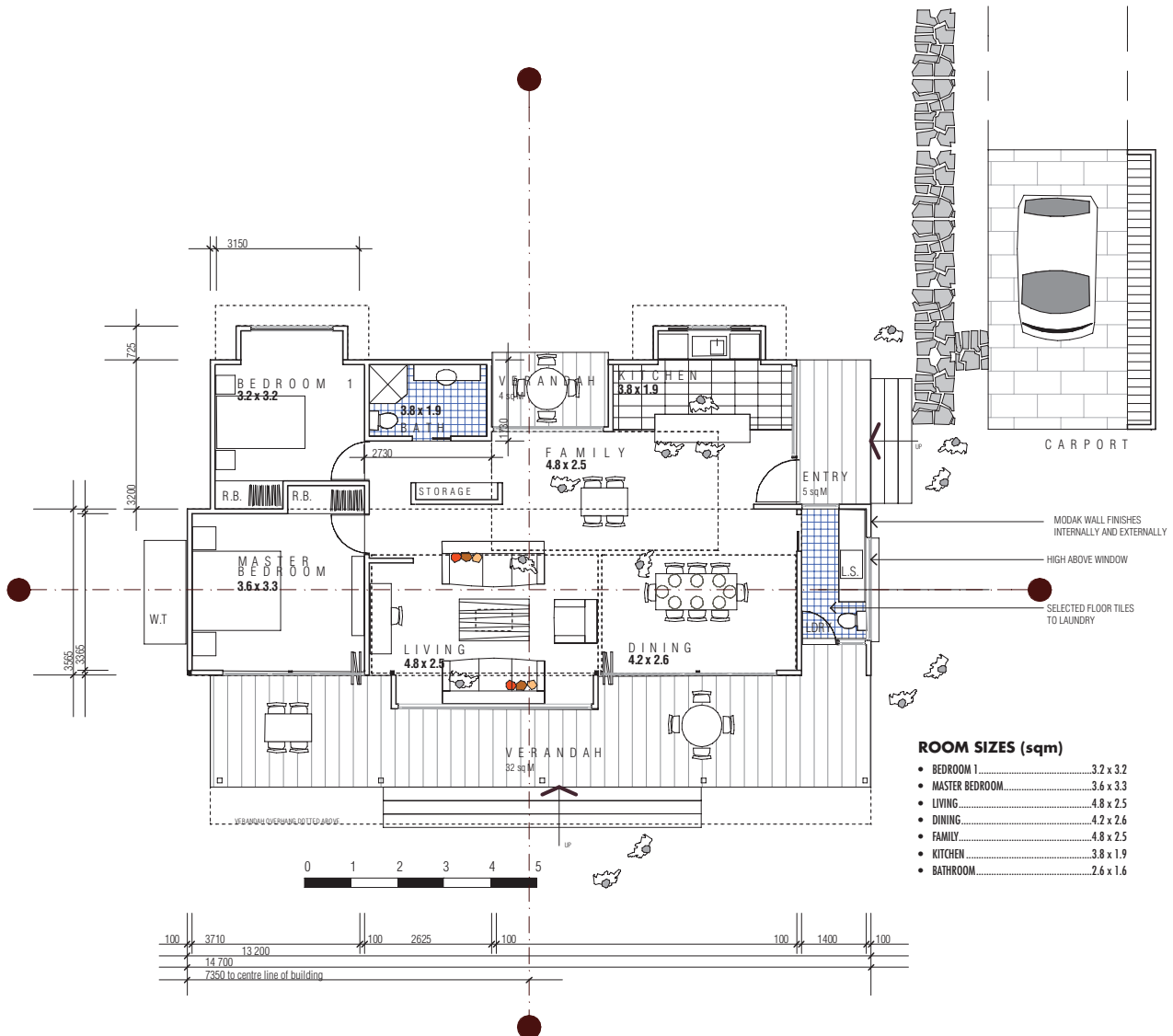
## Modak Design - "Outbak"





## Modak Design - "The Outbak" 2 bedroom

House Area	96sqm	<b>PRICES</b>	
Veranda	41sqm	2 Bedroom	from \$110,000
TOTAL AREA	137sqm	2 Bedroom Deluxe	from \$130,000



### SPECIFICATIONS

- Subfloors and Steel studs set at 1800cts set minimum 460mm off ground. Full heavy galvanized to Australian Standards.
- 100% Green and surpass all required standards in resistance and design.
- 1mm Zincalume Steel x 90mm fully engineered Cyclone, Earthquake and Fire resistant in excess of Australian Standards.
- All Verandahs covered Colorbond.
- Decking ModakBoard Strip 100mm x 20mm
- Colorbond water tank
- Outer walls Fireproof 20mm ModakBoard with Heavy Duty Acrylic Paint. All Floors are 20mm Fireproof ModakBoard.
- All Internal walls 10mm ModakBoard Fireproof sheeting.
- All Ceilings are 8mm Fireproof ModakBoard
- Windows Double glazed glass or unbreakable 3mm sheet glazed in treated and coated Sliding Steel Frames.
- Roof is Colorbond Custom Orb Sheeting or Colorbond pressed metal tiles.
- Solar Hotwater System installed with 12 Volt pressure reactive pump.
- Solar powered 12 Volt LED downlights in all rooms and verandahs.
- 240 Volt 1Kw Solar power on request.
- Outside Doors are Steel Security and all internal are steel with hardware handles etc.

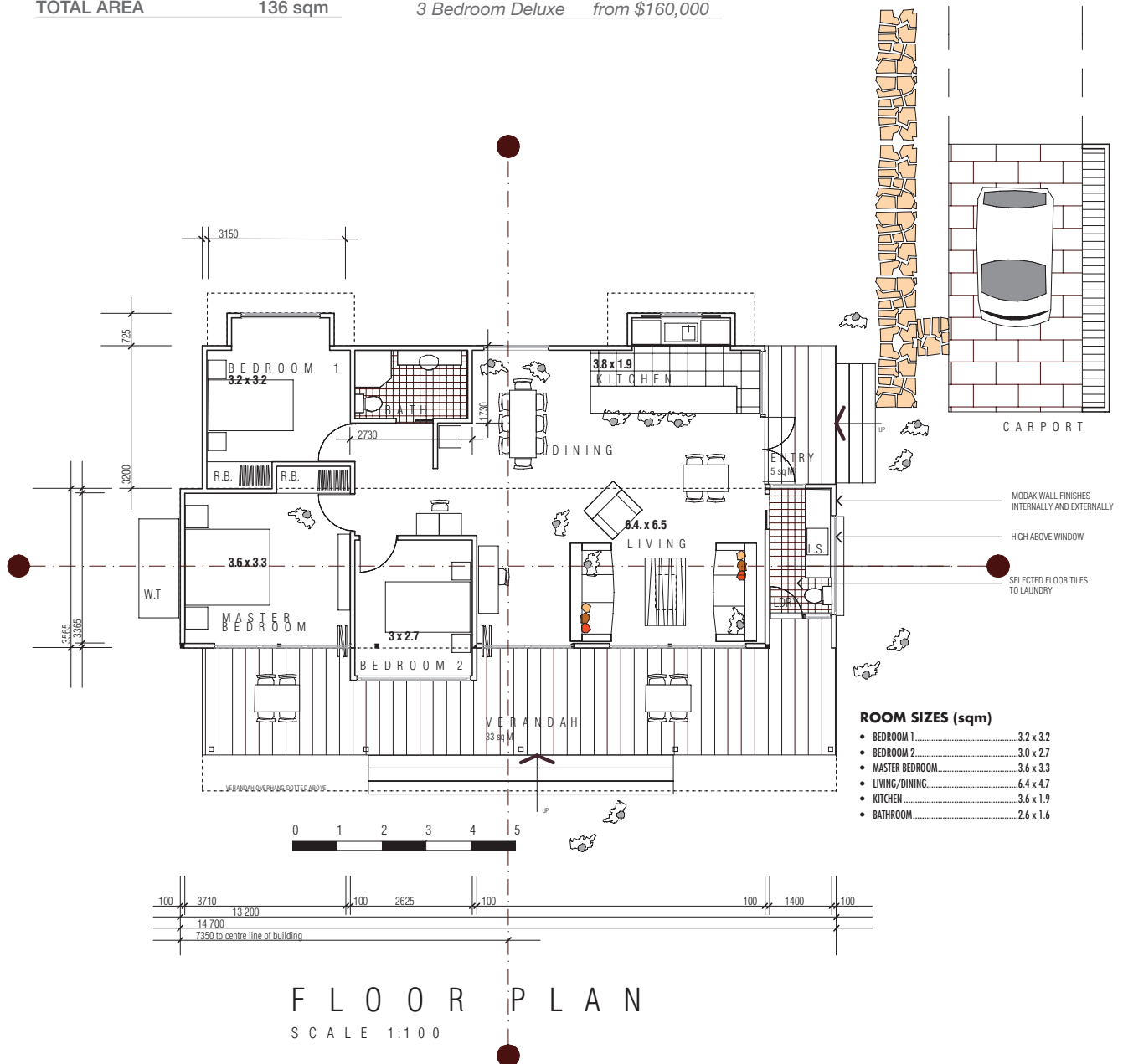
Note: Designs and Floor Plans are concept only. Final Floor Plans will be available when the display homes are released.





## Modak Design - "The Outbak" 3 bedroom

House Area	98 sqm	<b>PRICES</b>	
Veranda	38 sqm	3 Bedroom	from \$130,000
TOTAL AREA	136 sqm	3 Bedroom Deluxe	from \$160,000



### SPECIFICATIONS

- Subfloors and Steel studs set at 1800cts set minimum 460mm off ground. Full heavy galvanized to Australian Standards.
- 100% Green and surpass all required standards in resistance and design.
- 1mm Zincalume Steel x 90mm fully engineered Cyclone, Earthquake and Fire resistant in excess of Australian Standards.
- All Verandahs covered Colorbond.
- Decking ModakBoard Strip 100mm x 20mm
- Colorbond water tank
- Outer walls Fireproof 20mm ModakBoard with Heavy Duty Acrylic Paint. All Floors are 20mm Fireproof ModakBoard.
- All Internal walls 10mm ModakBoard Fireproof sheeting.
- All Ceilings are 8mm Fireproof ModakBoard
- Windows Double glazed glass or unbreakable 3mm sheet glazed in treated and coated Sliding Steel Frames.
- Roof is Colorbond Custom Orb Sheeting or Colorbond pressed metal tiles.
- Solar Hotwater System installed with 12 Volt pressure reactive pump.
- Solar powered 12 Volt LED downlights in all rooms and verandahs.
- 240 Volt 1Kw Solar power on request.
- Outside Doors are Steel Security and all internal are steel with hardware handles etc.

Note: Designs and Floor Plans are concept only. Final Floor Plans will be available when the display homes are released.

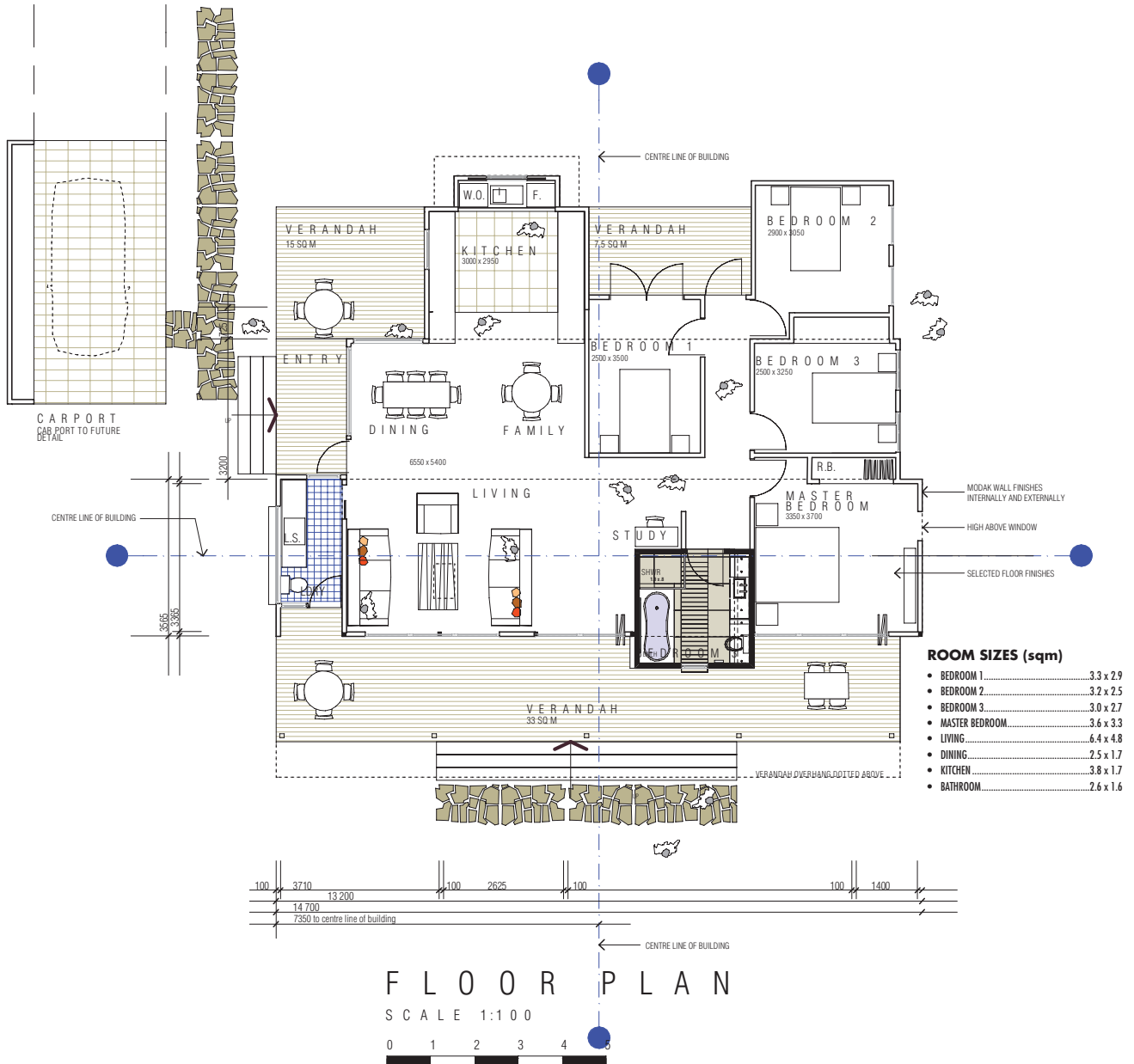




## Modak Design - "The Outbak" 4 bedroom

House Area	122.5 sqm
Veranda	55.5 sqm
<b>TOTAL AREA</b>	<b>178 sqm</b>

<b>PRICES</b>	
4 Bedroom	from \$155,000
4 Bedroom Deluxe	from \$180,000



### SPECIFICATIONS

- Subfloors and Steel studs set at 1800cts set minimum 460mm off ground. Full heavy galvanized to Australian Standards.
- 100% Green and surpasses all required standards in resistance and design.
- 1mm Zincalume Steel x 90mm fully engineered Cyclone, Earthquake and Fire resistant in excess of Australian Standards.
- All Verandahs covered Colorbond.
- Decking ModakBoard Strip 100mm x 20mm
- Colorbond water tank
- Outer walls Fireproof 20mm ModakBoard with Heavy Duty Acrylic Paint. All Floors are 20mm Fireproof ModakBoard.
- All internal walls 10mm ModakBoard fireproof sheeting.
- All Ceilings are 8mm Fireproof ModakBoard
- Windows Double glazed glass or unbreakable 3mm sheet glazed in treated and coated Sliding Steel Frames.
- Roof is Colorbond Custom Orb Sheeting or Colorbond pressed metal tiles.
- Solar Hotwater System installed with 12 Volt pressure reactive pump.
- Solar powered 12 Volt LED downlights in all rooms and verandahs.
- 240 Volt 1Kw Solar power on request.
- Outside Doors are Steel Security and all internal are steel with hardware handles etc.

Note: Designs and Floor Plans are concept only. Final Floor Plans will be available when the display homes are released.

